

LJPC MISSION PARTNER CATALOG

25 MISSION PARTNERS

IN THE SCHOOLS • IN THE CITY • AND AROUND THE WORLD



Welcome to the La Jolla Presbyterian Church Mission Partner Catalog

November 2017,

La Jolla Presbyterian Church is committed to mission. Whether starting new ministries in San Diego or connecting with churches around the world, LJPC has always seemed to have a deep commitment to serving people who sometimes go unnoticed.

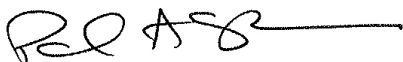
We are excited to be able to gather all of the missions and ministries that we support in one catalog. As you read through this catalog you will discover some of the work that these agencies and ministries are doing. It is truly inspiring!

You can also learn about ways that you can support our mission partners throughout the year. Most of them have volunteer opportunities and there are also ways that you can support them financially.

In Matthew 25 Jesus tells a parable about serving those who are hungry and thirsty and in need of clothes. He talks about those who find themselves unable to help themselves. He encourages his listeners to keep an eye out for those in need and to help them, because they will hear these words...*‘Truly I tell you, whatever you did for one of the least of these brothers and sisters of mine, you did for me.’ (Matthew 25:40)*

I want to encourage you to look through this catalog. You will be able to discover some ways that you and your family can join in the work that God is already doing through our amazing mission partners.

Blessings,

A handwritten signature in black ink, appearing to read "Paul Cunningham", with a long horizontal stroke extending to the right.

Rev. Dr. Paul Cunningham

Welcome to the La Jolla Presbyterian Church Mission Partner Catalog

The catalog also has gift suggestions that would make wonderful Christmas presents, birthday presents, any occasion presents. Few of our friends or family need more stuff, but they might be really touched to see that a donation in their name is providing tutoring for an urban child, or a Bible for a prisoner, or a sweater for a blind child in Malawi. We have gift cards that you can distribute to your family and friends from each mission partner, outlining what you chose in their name.

Our Partners in the Schools

When Christ talked about mission in Matthew 18 and 19, he included reaching out to strangers. He talked about the importance of children in the Kingdom of God. Many of the students and children in the San Diego area are recent arrivals in the U.S. or are at risk for various reasons here and around the world.

Our Partners in the City

When Christ talked about mission in Matthew 25, he included reaching out to serve the hungry, homeless, prisoners, and strangers. These may be people on the edge of economic survival, recently released prisoners, young military families, or refugees with scant resources.

Our Partners Around the World

In Africa, Central & South America, India, Mexico, Asia and Belgium LJPC has partners with whom we work to feed the hungry, clothe the naked, care for sick, and serve as we're needed in the name of Christ.

Great Places to Volunteer...

How do you decide where to get involved? It's a matter of prayer and passion. Read through this catalog prayerfully. Ask God to stir your heart for the need you can meet. Or are you already passionate about how you would like to serve? One of our partners has a place for you.

Great Gifts to Give...

Can you really give friends and family gifts that don't come from a department store? Yes. Be intentional in matching the gift to the person. Wrap the gift card that describes the mission just as you would any present. Few people need more "stuff." Many need the joy of knowing they helped a kid go to camp, bought medicine for a refugee, or gave someone a Bible in their native language.

Table of Contents

Arranged by Partner Category

Our Partners...In the Schools

Child Evangelism Fellowship of Belgium	5
La Jolla Language Center.....	8
Reality Changers	6
SunHouse Spring Break Outreach Young Life.....	7
UPLIFT/Kids at Heart	8
YoungLife (Southbay)	9

Our Partners...In the City

Adopt A Family.....	12
Alliance for African Assistance	11
Alliance Health Clinic	11
Iglesia Presbyteriana Emanuel	15
Interfaith Shelter Network.....	13
Ladle Fellowship	10
(MOM)Military Outreach Ministry San Diego.....	13
Nile Sisters Initiative.....	12
Pastors to Prisoners	14
(PUM)Presbyterian Urban Ministries	14
San Diego Street Choir (an LJPC Outreach)	10
Sudanese Presbyterian Church.....	15
Urban Life (Orange Ave/Southeast San Diego)	16
Ebenezer Church, SD (Linda Vista Church Plant)	17

Our Partners...Around the World

Baja Christian Ministries	19
Baja Presbyterian Missions.....	19
Belize (Word@Work).....	20
Gleanings for the Hungry (Dinuba, CA).....	22
Niños con Valor (Bolivia).....	22
Malawi (Lingadzi CCAAP/Nykoma Synod)	21
Plant With Purpose	23
proVISION ASIA	18
Mission Trip Opportunities 2018	24

Our Partners...in the Schools



Child Evangelism Fellowship BELGIUM & Luxembourg



Peter & Edith (Didi) Hegnauer (National Directors)

Our purpose & mission:

To bring the Good News to the unreached children & youth.
Disciple them and establish them in a local Bible-believing church.

This is accomplished through:

- direct ministries with kids (Children's Bible Clubs, Camps)
- the training of teachers, missionaries and pastors
- teaching materials (illustrated flashcards, songs, CD's, tracts, mission stories and children/youth devotionals)

Didi has been personally involved as an artist/illustrator for CEF-Europe since 1974.



Great Gifts to Give

\$ 5 = Devotional booklets
for 8-14yr olds

\$ 15 = Christmas Box for
inner city kids/
refugees

\$ 40 = Youth attend
30hr course on
Children's Ministry



**Mission Trip opportunities in Belgium in the summer (June/July 2018),
Arab Protestant Church, or Hispanic or English VBS.**

Didi Hegnauer didi.hegnauer@gmail.com (Phone: 011-322-725-12-62)

Our Partners...in the Schools

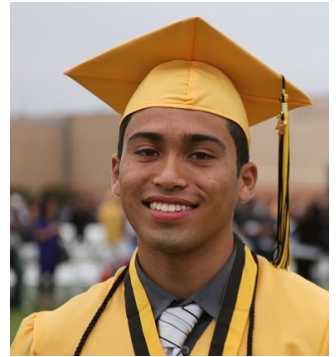


*Make a million-dollar impact for a
fraction of the price!*

www.realitychangers.org

At Reality Changers, college changes everything for low-income youth seeking to become first generation college students. We began in 2001 with just \$300 and now, thanks to your help,

Reality Changers is San Diego's leading tutoring program for scholarships. Here's how you can make an impact:



Great Places to Volunteer

- **IMPACT Team Tutors** - Tuesday, Wednesday or Thursday 6-9
- **College Apps Academy** - help seniors prepare for college
- **Forest Home Counselor**
- **One Time Service Opportunity** - help with special events

Christopher Yanov at chris@realitychangers.org.

Great Gifts to Give

- \$250** = sends 1 student to Forest Home Summer Camp for 3 days
- \$2,500** = sends 1 student to UCSD's summer program for 3 wks
- \$25,000** = produces over 1,000,000 in scholarships for 20 students



Our Partners...in the Schools



Sunhouse House building Trip

Alex Gill, alexg@ljpres.org 858-729-5539



Great Places to Volunteer

- Help write VBS curriculum
- Join our Prayer Team
- Help @Pancake Breakfast Fundraiser, end of February

Great Gifts to Give

- \$5** = VBS pack of crayons
- \$15** = Bilingual children's bible
- \$25** = Electrical wiring & outlets
- \$100** = Door w/lock
- \$275** = Sponsor a student to attend Mission Trip, help change the world

Each year SunHouse students head south of the border to use their skills, strength, and heart for service to make a life changing impact for families in need of a safe home. In the community of Tecate, Mexico it is common for homes to be built of plywood, garage doors, and tarps. We have the opportunity to instead provide families with structurally sound houses that they can turn into loving homes for their families. Houses are not the only thing built on this trip though! We also have a group of students leading a Vacation Bible School for children in the community in which we are building homes. VBS allows our group to build and strengthen the children's relationship with Jesus. Finally, through this mission trip we have the opportunity to build and invest in future church leaders as well. This trip allows for our students to explore what it means to serve, lead, and depend upon God in missional opportunities.

Our Partners...in the Schools



UPLIFT/Kids at Heart

(URBAN PEOPLE LIVING IN FAITH AND TRUST)
A Christian ministry with four programs and one purpose: to provide hope for a better tomorrow for some of the inner city's most vulnerable populations. **Kids at Heart** offers one-to-one tutoring and mentoring for at-risk students, grades K to 12.

Great Volunteer Opportunities

- Volunteer as a tutor
- Volunteer as a mentor for a teenage girl

Great Gifts to Give

\$30/month = One student for 1 year in KAH tutoring

\$32/month = Calif. ID for 4 homeless persons

\$50/month = Nutritious snacks for students

www.upliftsandiego.org

619-234-4504



La Jolla English Language Center

The La Jolla English Language Center offers adult literacy tutoring and English as a Second Language (ESL) classes on Tuesday evenings from 7-8:30pm at La Jolla

Presbyterian Church. A non-profit organization, the Center is dedicated to helping adults, adolescents, and children learn to speak, read and write English to improve and enrich their lives and, in turn, San Diego communities. The classes are free and the costs for books and class materials are subsidized by donations. The La Jolla English Language Center is a member of the Laubach Literacy Council of San Diego County and is affiliated with Laubach/Proliteracy America and Worldwide.

Great places to Volunteer

- Volunteer to help the Laubach Literacy Council of San Diego Co.
- Refer someone who wants to learn English.

Marc Angel,
Director
858-456-9266

Our Partners...in the Schools



Young Life South Bay has been serving jr. high and high school students in the inner city of San Diego for the last 19 years. Young Life leaders walk the public school campuses and bring the gospel to students who are living in broken homes.



Our mission is that every adolescent will have the opportunity to meet Jesus Christ and follow Him. We accomplish that by earning the right to be heard through incarnational ministry. We build relationships with students, provide a safe and fun place where they can meet and hear the gospel and provide opportunities to attend weekend and week long camps as well as disciple them through bible study and partnering with churches. Our most recent start up is a club for teen moms and dads.

Great gifts to give

\$10 = 2 pizzas for YL club

\$25 = diapers for a teen mom

\$50 = bible study food/ bibles

\$100 = weekend camp at Oakbridge

Great ways to volunteer:

- Serve on the area committee
- Help with an event
- Host dinner for volunteers
- Mentor a volunteer leader(college age)



haddad78@hotmail.com

Luma Haddad YL South Bay Area Director 619-277-1144

Our Partners...in the City

½ Day Missions

Ladle Fellowship

½ Day Missions



Ladle Fellowship is a Christ-centered soup kitchen that was established 34 years ago by First Presbyterian Church in downtown San Diego. We are committed to feeding both the body and the spirit by bringing the Word of God, as well as a hot meal to the homeless, poor, unemployed and elderly. Since Ladle Fellowship first began, more than 460,000 meals have been served. Each year we distribute over 9,000 articles of clothing, jackets, and blankets. With your support, we provide weekly hot meals, a weekly Bible study, mentoring, choir, and a



Great Gifts to Give

\$9 = A Hot Meal & blanket

\$49 = Street Corner Care medical clinic supplies

\$520 = Entire Sunday Meal for the homeless

Volunteer on the 5th Sundays !

John O'Dea johnobruin@gmail.com

An LJPC
outreach



An LJPC
outreach

Singing together in a choir is a powerful way to restore physical health, mental and emotional well-being, and create connections between people that have often been broken while living on the streets. The subtlety of the concept that “the whole is greater than the sum of the parts” is not lost on members of a choir. **Meets Wednesdays at 1st Presbyterian Church downtown.**

Ron Bolles, Director Worship & Arts, 858-729-5511 (Office) 619-755-7255 (Cell)

ronb@ljpres.org <https://www.facebook.com/sandiegostreetchoir/> <http://sandiegostreetchoir.com>

Great Places to Volunteer

- Sing with the Choir/support learning music
- Transportation for singer to/from rehearsal

Great Gifts to Give

\$10 = T-Shirt w/SDSC Logo

\$35 = 1 piece of music/CD track

\$50 = Accompanist



Our Partners...In the City

ALLIANCE
FOR
AFRICAN
ASSISTANCE

Alliance for African

Assistance Guided by Christian Values, our mission is to assist refugees, immigrants, the economically challenged, and underserved to become self-sufficient, productive members of their communities.



Great Gifts to Give

- \$5** = School supplies for a Uganda child
- \$25** = 1 month school sponsorship Gulu
- \$72** = Refugee transportation
- \$75** = One month supply of diapers



Alliance Health Clinic

With support from LJPC, the Alliance Health Clinic provides primary care for refugees and other medically underserved multi-cultural families. The clinic gives refugees a medical home that understands their circumstance and respects their cultural values and traditions.

Great Gifts to Give

- \$25** = Moisturizing soap and lotion.
- \$25** = Vitamins to build patient health.
- \$25** = Healthy food items
- \$75** = Medications for refugees

Great Places to Volunteer

- Mentor a family.
- Administrative work.
- Drive refugees to their appointments



Great Places to Volunteer

- Provide medical services in the Clinic.
- Donate professional services for patients
- Offer rides to and from the clinic

Sandee Olea (619) 286-9052
sandee@alliance-for-africa.org

Our Partners...In the City

Nile Sisters Development Initiative

Founded by Elizabeth Lou, a refugee mother from



Emotional Support



Social Services



Career Development

South Sudan, Nile Sisters is committed to helping war affected refugee families adjust to new cultures in San Diego. Nile Sisters' mission is to educate, support, and offer training to refugee and immigrant women and their families to help them overcome barriers to social and economic self-reliance through teaching English, funding vocational training, and providing health resources in a culturally and linguistically competent manner.

Great Gifts to Give

- \$40** = Help fill a basket of essential goods
- \$50** = school supplies for a refugee student
- \$75** = Monthly Bus Pass for a refugee
- \$150** = Safety Car Seat for refugee children
- \$240** = 6 hours of driving training for a refugee

Nile Sisters (619) 265-2959
info@nilesisters.org

Great Places to Volunteer

- One-on-one English (ESL) tutoring for refugees and immigrants
- One-on-one Certified Nursing Assistant (CNA) student tutor-



Adopt A Refugee Family—A Christmas Tradition

When refugees come to the United States, they may have nothing more than the clothes they are wearing. Women head many of the households because their husbands were killed in war, and the women and children have fled to safety. Find a refugee family that's right for you, your family, or your group to adopt for Christmas.



Our Partners...In the City

SD Military Outreach Ministries



Great Gifts to Give

\$25 = Infant formula or baby food

\$35 = Package of diapers or Gift Card for special needs

\$50 = Emergency food bag or exchange card

Barbara Chavez (619) 843-8964
www.sandiegomom.org

SDMOM is faith based public charity supported by churches, businesses and private donors. SDMOM helps thousands of enlisted families who are far from home with services like our holiday toy stores, baby showers, new mom hospital visits, assistance to wounded service members and their families and many other family and holiday events. Provided free of charge to enlisted military families of all faiths.

Great Places to Volunteer

- Schedule a time to work in the warehouse sorting clothes, packing food bags etc.
- Help in the LJPC Holiday Store as shopping assistant.



INTERFAITH
SHELTER
NETWORK

Interfaith Shelter Network is all denominations county-wide in a Rotational Shelter program to help them find jobs & housing so they can leave homelessness behind. Congregations host the program in their facilities for two or four weeks a year providing volunteers for meals and overnight hosting, transportation and donations. www.interfaithshelternetwork.org

Great Place to Volunteer

If you come to set up and take down the shelter, spend the night or prepare and share a meal you are in for an unforgettable experience.

Jon or Bev Mangerich (858)483-9654
Jon@mangerich.us or Bev@mangerich.us

Great Gifts to Give

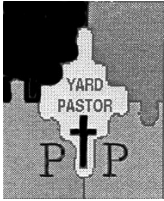
\$10 = Toiletries kit for 1

\$25 = Gift cards for essential shopping

\$25 = Shave & a haircut

\$100 = apply for security deposit on an apartment.

Our Partners...In the City



PASTORS TO PRISONERS

Pastors to Prisoners provides "yard pastors" to assist Protestant institutional prison chaplains. The task of ministering to at least 5000 men held in five enclosures within the prison is a challenge that allows for the chaplain to spend two to three hours a week on each enclosure conducting inmate worship services, Bible studies, one-on-one counseling and mentoring, and supervising other chapel programs. Their mission is to bring inmates to the Lord and prepare them to make the right choices while inside so that, upon release, they are better able to lead productive lives.

Pastor Elena Hernandez
godisgood.allthetimes91@gmail.com



PUM Presbyterian
Urban
Ministries

2459 Market Street
San Diego, CA 92102

A mission of the San Diego Presbytery since 1968

Presbyterian Urban Ministries, is a Christian mission organization dedicated to helping people in need physically and spiritually, and to changing their lives through a holistic, transformational ministry that brings them to Jesus Christ.

(PUM) is a mission of the Presbytery of San Diego. The ministry serves the poor and homeless of urban San Diego.

info@pumsd.org 619-232-2753 www.pumsd.org

Great Gifts to Give

\$15 = Blanket

\$30 = Birth Certificate

\$35 = Steel Toed Boots required for work

Great Gifts to Give

\$10 = A Bible for a prison inmate

\$15 = 1/2 hour of yard pastor ministry

\$30 = One hour of yard pastor ministry



Great Places to Volunteer

There are always opportunities for new volunteers at the Calif. Correctional Facility in Tehachapi and also at R. J. Donovan Correctional & Rehab. Facility in San Diego.



Our Partners...in the City



*Iglesia
Presbiteriana
Emmanuel*

2691 B Street
San Diego, CA 92102

www.IglesiaPSD.org
619 232-1690



Iglesia Presbiteriana Emmanuel Church ministers to the large, Spanish-speaking population in downtown and Golden Hills. Its programs include Worship

Great Gifts to Give

\$10 = Bible for the new believers

\$20 = VBS for one child

\$50 = Help send a student to summer camp

\$100 = New instruments for the church musicians

Services, Sunday school, home Bible study, youth groups, Vacation Bible School and after-school tutoring in cooperation with Kids at Heart.

Great Places to Volunteer

- Youth connection with other church youth groups
- Help with Vacation Bible School next summer.

Pedro Jpetul J'ernantes

jjmayanmd1@yahoo.com

Rossy Estrada at rossyeestrada@yahoo.com



Sudanese Presbyterian Church

In 2002, the churches in our Presbytery joined hearts, hands and financial gifts to build a worship center for Sudanese refugees struggling to make San Diego their home. Today, the church continues to hold Sunday worship services, and to provide spiritual education for their children to keep the Sudanese culture alive and develop future leadership for the congregation. Since most of the refugees are still in minimum income jobs, supporting the church budget is difficult to impossible.

Great Gifts to Give

\$20 = Christmas gifts for children in the congregation

\$25 = Help support Vacation Bible School

\$50 = Support Youth Ministry

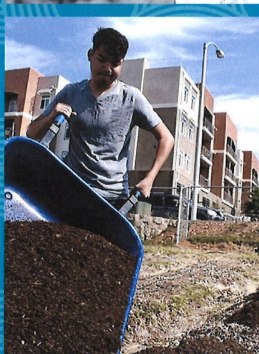
\$100 = Support Pastoral Salary.

William Tut

(619) 610-8515

williamdtut@yahoo.com

Our Partners...In the City



At UrbanLife, we believe that TRANSFORMED YOUTH CAN TRANSFORM THEIR NEIGHBORHOODS

UrbanLife is LJPC's outreach ministry to the neighborhoods of City Heights and Southeast San Diego where we are dedicated to loving and serving historically disenfranchised youth and their families.

VOLUNTEER WITH URBANLIFE

Lead a high school small group!

Mondays @ 5pm, contact kathy@urbanlifesd.org

Tutor an ESL City Heights Runner high schooler

Wednesdays @ 5:30pm, contact rachel@urbanlifesd.org

Bring a group to the UrbanLife Farm

Flexible scheduling, contact sarahcarter@urbanlifesd.org

Great Gifts to Give

\$10 = Shovel for UrbanLife Farms student

\$50 = Crosscountry shoes for student runner

\$600 = student job training at the Café or on the Farm

COME SEE US!

City Heights Runners 5k & Kids Fun Run
February 24th, 2017

UrbanLife Celebration Banquet
March 4th, 2017

Visit UrbanLife anytime! Contact Sarah Carter to schedule a tour (sarahcarter@urbanlifesd.org)

Our Partners...In the City



Ebenezer Church, SD: The People's Cathedral

Our vision is to create a living metaphor of how an immigrant, under-resourced, and often exploited community can come to life when engaged by selfless followers of Jesus.

Great Ways to Volunteer

- 7th grade mentorship
- Middle School sports outreach(basketball/soccer)
- Sunday evening (5pm) kids program
- Support us on Facebook (@Ebenezerchurchsd)



Great Gifts to Give

\$5—\$50 = Grocery Gift cards for grocery/food

\$10 = “Be Nice” t-shirt(anti-bullying campaign@school)

\$10 = Craft supplies for kids program

\$50 = Emergency Shelter for at-risk families

\$100 = Sound AV equipment for this new church plant

\$100 = Help support pastoral salaries

Engaging Linda Vista to reach the nations for Jesus.
<http://ebenezerchurchsd.com/>

Our Partners...Around the World

proVISION ASIA

Dr. Chip Kingery 818-309-8395
chipkingery@provisionasia.org



proVISION ASIA serves people with disabilities in Bangalore, India. Founded by Chip and Jean Kingery in 1986, this Christ-centered ministry takes the Luke mandate seriously, empowering differently-abled individuals to independent and fulfilling lives; extending a hand up—not a handout, inspiring Hope by providing an environment that fosters holistic transformation; enabling people with disabilities to experience Abundant Life and reach their highest potential.

Great Places to Volunteer

- Become a prayer Warrior for the souls of India!
- Utilize your professional skills of physiotherapy or occupational therapy in our Rehabilitation Unit.
- Serve as a consultant, teacher, or autism specialist in our special needs school

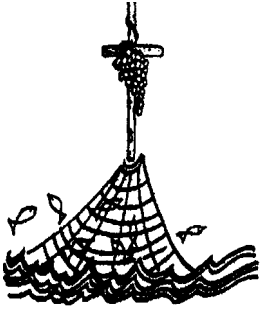
GREAT GIFTS TO GIVE

\$10—\$50 = sponsor a child's wheelchair & an audio solar bible

\$100 = provide an educational scholarship for a disabled child

\$500 = exercise machine for our rehab unit

Our Partners...Around the World



BAJA CHRISTIAN MINISTRIES

Baja Christian Ministries, established in 1991, is a non-denominational, non-profit organization set up to facilitate groups

from around the world to participate in short term missions in Baja, Mexico through building homes, Churches and much more.

www.bajachristian.org Cheryl (909) 627-4339
cherylwalker@bajachristian.org

Great Gifts to Give

\$5 - \$7,000 towards the construction of a home for a family in need

\$10-\$250—sponsors 1-25 people to do the Purple Book Program



Contact Bob Battenfield at 619-465-8305 or bobbattenfield@sbcglobal.net and bajapresbyterianmissions.org

Great Gifts to Give

\$10-\$100 1 square ft/meter of construction

\$13 = 1 school supplies backpack

\$30 = 1 Spanish leader-training Study Bible



Great Places to Volunteer

- House Building trips
- Speak Spanish—translators always needed
- Pray for our organization,

BAJA PRESBYTERIAN MISSIONS

Chartered in 1964, Baja Presbyterian Missions (BPM) is grateful for the major support La Jolla PC has provided over these many decades, supporting our non-profit as we build churches in Mexico.

Sign up at our table to indicate interest in this year's one day Mission Trip to visit the newest construction site in Mexico. Plus we will enjoy lunch in Ensenada.

Our Partners...Around the World



Belize - The Word at Work

We are grateful for our long and enduring relationship with our friends at La Jolla Presbyterian Church! Your continued work in Valley of Peace is a wonderful example of our mission statement!

- Gomer House — Child Development Foundation is working towards making this residential facility a reality for young women who are rescued from human trafficking.

- 2017 Christmas Project — Gifts have been shipped to Belize; we are now raising funds to provide phone cards for inmates at the Belize Central Prison along with funds to help our partners provide Christmas parties for their congregations and those they serve.

Your partnership is vital to our ability to fulfill the vision God has planted in us. Thank you for remembering The Word at Work in your giving in 2017!



- Mollie Fields mollie@twaw.org
- Tim Tam timtam@twaw.org

- www.facebook.com/TWAWministry
- www.twaw.org



Great Gifts to Give

\$5—Buy a phone card so an inmate can connect w/his family on Christmas.

\$10—Buy a tool for Kenny's/Chepito's tool kit.

\$150— Help a child in Belize obtain an education.

\$400— Ship a pallet of donated medical supplies & education materials to Belize.

Our Partners...Around the World

MALAWI



Why do we take mission trips half way around the world to Malawi, Africa? Because God has called us into a covenant relationship with a Presbyterian Church there, **Lingadzi CCAP**. We do work projects together, pray

together, and learn how Christians here and in a Third World country are sisters and brothers in Christ. Teams from LJPC have gone to Malawi for 15 years including a trip in May 2017. In the Fall of 2018, we hope to host a team from Lingadzi CCAP to LJPC.

Great Gifts to Give

\$5 = A sweater for a child at the Home and School for the Blind

\$25 = Support for the 2018 Malawi team

\$50 = 3 months support for a seminary student

\$1000 = Support the seminary for a month

Christy Zatkin

czatkin@me.com

or John Boyd

858-997-7002

Drjohn96@me.com



Great Places to Volunteer

- Be part of the LJPC team that meets monthly to pray for Malawi
 - Join the JPC team to prepare for the Lingadzi team's visit
- Help with transportation, hous-

Our Partners...Around the World



Help Transform a Child's Life!

Niños con Valor is providing nurturing, God-centered, family-style care to children who have been orphaned, abandoned or suffered abuse, helping other organizations improve their quality of care, and leading efforts to reduce discrimination against children living with HIV/AIDS.

Learn more online: <http://www.ninosconvalor.org>, or by writing Tyson at tyson@ninosconvalor.org.



Great Places to Volunteer

- Learn about future mission teams! (susanna@ninosconvalor.org)
- Sign up for our prayer letters and pray! (<http://ninosconvalor.org/join>)
- Serve our kids as a volunteer in Bolivia (volunteer@ninosconvalor.org)
- Join one of our US committees (info@ninosconvalor.org)

Great Gifts to Give

\$10 = A book for a boy or girl in our homes

\$20 = 3 Sessions of physiotherapy

\$30/month = 1 year of Sponsorship of one of our children

\$360/year

Help sponsor a child for 1 year



Our Partners...Around the World



Economic Empowerment

Increased access to financial tools enables families to save profits from their farms and invest in their dreams.

Environmental Restoration

Across Plant With Purpose programs, 18.9 million trees have been planted since 1984. Farming families are revitalizing their land and increasing crop production through sustainable agriculture.



Spiritual Renewal

Partnering with 482 local churches, Plant With Purpose provides Christ-centered training, enabling church leaders to build their communities in faith.

Great Gifts to Give

\$1 Plants a Tree, **\$10** Plants an Orchard, and **\$15** Plants a Hillside
\$10 = Give a Clutch of Chicks
\$20 = Purchase a Pair of Breeding Bunnies
\$50 = Establish a Family Garden

Great Places to Volunteer

- Participate in local community outreach
- Advocate for Plant With Purpose in your own sphere, host a “Party With Purpose”

Plant With Purpose

85% of people in extreme poverty are rural farming families. Deforestation leaves these families even more vulnerable. Plant With Purpose is combating two of the world’s most critical issues: extreme poverty and deforestation. Through holistic community development, families are growing out of poverty, reversing deforestation, and walking with God.

Kirstie@plantwithpurpose.org

www.plantwithpurpose.org

LJPC Mission Trips—U.S. & International



Malawi – October 2018

LJPC Malawi Supporters hope to welcome a Team from Lingadzi CCAP, our partner church in Malawi. (see pg.21)

Christy Zatkin czatkin@me.com



Belize – Summer 2018

Pastor Cunningham

Trip Leader (see pg. 20)

paulc@ljpres.org



Mexico Sunhouse Spring Break Mission Trip 2018

(see pg.7) Alyssa Thomas

alyssat@ljpres.org



Dinuba, Calif. Gleanings for the Hungry October 2018

Michelle Whitney

michellew@ljpres.org